

Yin + Yang

Natural Stone

Available Colors



YY04 Black Dragon



YY03 Snow Flower



YY01 Bonsai



YY02 Silk Fan



YY07 Moon Gate



YY05 Koi Pond



YY06 Lotus Blossom



YY08 Tea Garden



Floor:

YY04/.10103HEX ► Black Dragon 1 x 3 Elongated Hex
Argent – A1418 ► Concrete Jungle 12 x 12

Wall:

YY07/.1.5.5MOS ► Moon Gate 1/2 x 1/2 Mosaic
YY04/.11.56.5BR ► Black Dragon 1-1/2 x 6-1/2 Brick

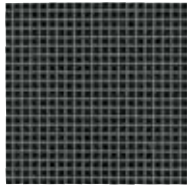


Yin + Yang

Natural Stone

Available Colors and Sizes

Black Dragon



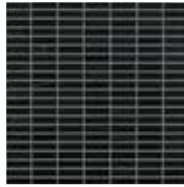
YY04/.1.5.5MOS
1/2 x 1/2 Mosaic



YY04/.10103HEX
1 x 3 Elongated Hex



YY04/.10103HB
1 x 3 Herringbone



YY04/.1.51.5MOS
1/2 x 1-1/2 Stacked Mosaic



YY04/.1MIXMOS
Linear Mosaic

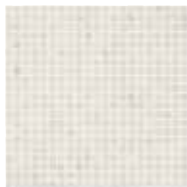


YY04/.11.56.5BR**
1-1/2 x 6-1/2 Brick



YY04/.10312PLK**
3 x 12 Plank

Snow Flower



YY03/.1.5.5MOS
1/2 x 1/2 Mosaic



YY03/.10103HEX
1 x 3 Elongated Hex



YY03/.10103HB
1 x 3 Herringbone



YY03/.1.51.5MOS
1/2 x 1-1/2 Stacked Mosaic



YY03/.1MIXMOS
Linear Mosaic



YY03/.11.56.5BR**
1-1/2 x 6-1/2 Brick



YY03/.10312PLK**
3 x 12 Plank

Koi Pond



YY05/.1.5.5MOS
1/2 x 1/2 Mosaic



YY05/.10103HEX
1 x 3 Elongated Hex



YY05/.10103HB
1 x 3 Herringbone



YY05/.1.51.5MOS
1/2 x 1-1/2 Stacked Mosaic



YY05/.1MIXMOS
Linear Mosaic



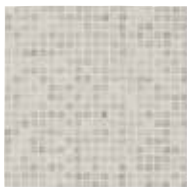
YY05/.11.56.5BR**
1-1/2 x 6-1/2 Brick



YY05/.10312PLK**
3 x 12 Plank

Koi Pond displays a wide variation in colors. Please refer to CrossvilleInc.com for photos. Always work from at least four cartons to ensure optimum installation.

Moon Gate



YY07/.1.5.5MOS
1/2 x 1/2 Mosaic



YY07/.10103HEX
1 x 3 Elongated Hex



YY07/.10103HB
1 x 3 Herringbone



YY07/.1.51.5MOS
1/2 x 1-1/2 Stacked Mosaic



YY07/.1MIXMOS
Linear Mosaic



YY07/.11.56.5BR**
1-1/2 x 6-1/2 Brick



YY07/.10312PLK**
3 x 12 Plank

** Sold by the individual piece.

* Please note that the various tile planks and mosaics in the Yin + Yang series are modular with each other however; the facial dimensions and thickness of cut stone tiles can vary. These irregularities are what gives stone tiles and mosaics their handmade appearance. As such, very narrow grout joints and precise alignment of the field tiles may be difficult to achieve.



Yin + Yang

Natural Stone

Available Colors and Sizes

Bonsai



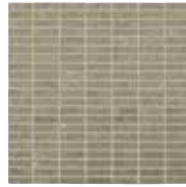
YY01/.1.5.5MOS
1/2 x 1/2 Mosaic



YY01/.10103HEX
1 x 3 Elongated Hex



YY01/.10103HB
1 x 3 Herringbone



YY01/.1.51.5MOS
1/2 x 1-1/2 Stacked Mosaic



YY01/.1MIXMOS
Linear Mosaic



YY01/.11.56.5BR**
1-1/2 x 6-1/2 Brick

YY01/.10312PLK**
3 x 12 Plank

Silk Fan



YY02/.1.5.5MOS
1/2 x 1/2 Mosaic



YY02/.10103HEX
1 x 3 Elongated Hex



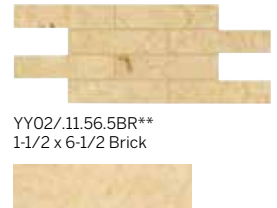
YY02/.10103HB
1 x 3 Herringbone



YY02/.1.51.5MOS
1/2 x 1-1/2 Stacked Mosaic



YY02/.1MIXMOS
Linear Mosaic



YY02/.11.56.5BR**
1-1/2 x 6-1/2 Brick

YY02/.10312PLK**
3 x 12 Plank

Lotus Blossom



YY06/.1.5.5MOS
1/2 x 1/2 Mosaic



YY06/.10103HEX
1 x 3 Elongated Hex



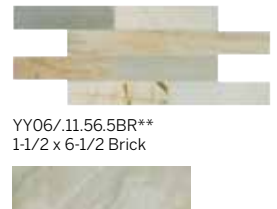
YY06/.10103HB
1 x 3 Herringbone



YY06/.1.51.5MOS
1/2 x 1-1/2 Stacked Mosaic



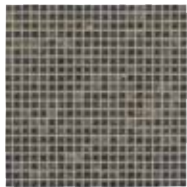
YY06/.1MIXMOS
Linear Mosaic



YY06/.11.56.5BR**
1-1/2 x 6-1/2 Brick

YY06/.10312PLK**
3 x 12 Plank

Tea Garden



YY08/.1.5.5MOS
1/2 x 1/2 Mosaic



YY08/.10103HEX
1 x 3 Elongated Hex



YY08/.10103HB
1 x 3 Herringbone



YY08/.1.51.5MOS
1/2 x 1-1/2 Stacked Mosaic



YY08/.1MIXMOS
Linear Mosaic



YY08/.11.56.5BR**
1-1/2 x 6-1/2 Brick

YY08/.10312PLK**
3 x 12 Plank

** Sold by the individual piece.

* Please note that the various tile planks and mosaics in the Yin + Yang series are modular with each other however; the facial dimensions and thickness of cut stone tiles can vary. These irregularities are what gives stone tiles and mosaics their handmade appearance. As such, very narrow grout joints and precise alignment of the field tiles may be difficult to achieve.



Application Areas

Interior Floors (dry)	Interior Walls (wet/dry)	Exterior Walls	Interior Floors (Standing water/shower floors)	Exterior/Paving	Pool/Fountain Full Lining**	Water Line Pool/Fountains
✓	✓					

For more information on ANSI- A362.3 visit our website at <https://www.crossvilleinc.com/Resources/Tile-101/DCOF?tab=1>

Sizes

Description	Nominal (in)	Actual (mm)	Thickness (in)
1 x 3 Herringbone*	13 x 13	332.21 x 332.21	10
1-1/2 x 6-1/2 Brick**	1-1/2 x 6-1/2	41 x 170	10
1/2 x 1-1/2 Mosaic*	12 x 12	299 x 299	10
1 x 3 Elongated Hex*	10 x 13	223.52 x 294	10
1/2 x 1-1/2 Stacked Mosaic*	12 x 12	299 x 299	10
3 x 12 Plank**	3 x 12	84 x 299	10
Linear Mosaic*+	11-1/2 x 11-3/4	298 x 295	10

* Mesh Mounted.

** Sold as loose pieces

** Linear Mosaic consists of 15 x 98, 23 x 148, and 38 x 148 tiles

Features and Benefits

- Natural stone tile in modular, mosaic shapes and sizes
- Well-balanced stone shades to harmonize with decor
- Versatile options for interior walls, floors and outdoor vertical surfaces

Recommended Use

Yin + Yang natural stone is recommended for interior walls. It is recommended for interior floors except where standing water may occur. Yin + Yang is not suitable for the lining of pools, fountains, or spas. This natural stone displays a wide variation in colors. Please refer to CrossvilleInc.com for photos. Always work from at least four cartons to ensure optimum installation.

Our Warranty

Crossville Inc guarantees that its products will meet or exceed the performance specifications outlined in ANSI A137.1-2022 and in the performance data section of the Crossville, Inc. general product catalog. For complete details check our website at CrossvilleInc.com.

Care and Maintenance

For complete care and maintenance information of stone products, the Marble Institute of America provides extensive information on their website, marbleinstitute.com/consumerresources/care.cfm. Phone (440) 250-9222

Shade & Texture

Significant variation is part of the inherent beauty of natural stone. Expect a wide range in color and pattern. Inspect tile upon delivery and for best results, blend tile from several cartons during installation.

* Please note that the various tile planks and mosaics in the Yin + Yang series are modular with each other however; the facial dimensions and thickness of cut stone tiles can vary. These irregularities are what gives stone tiles and mosaics their handmade appearance. As such, very narrow grout joints and precise alignment of the field tiles may be difficult to achieve.

Crossville® Sample Express

Visit the website to learn more:

CrossvilleInc.com/Products/Yin-Yang

Loose Tile Samples

Sizes may vary depending on product series
Max. of 4 large field tile per order

Standard Shipping

FedEX Ground

National Accounts

For over 20 years we have been offering Porcelain tile to commercial customers at National Accounts pricing programs with special discounts. The National Accounts department provides materials forecasting, sales support and samples.

CrossvilleInc.com

If you want a better idea of what Crossville tile would look like in a particular room setting, simply visit our website and click on Cross-Vision. This powerful software tool allows you to visualize different types of Crossville tile. In addition, you'll find comprehensive information about Crossville's entire portfolio of products. You can also learn about the latest styles and trends from industry experts, download detailed care and maintenance instructions for our various products, or browse electronic versions of Crossville's product brochures. So whether you need information about Crossville products or tile in general, please visit us at CrossvilleInc.com.

Trade Organizations



Environmentally Aware

